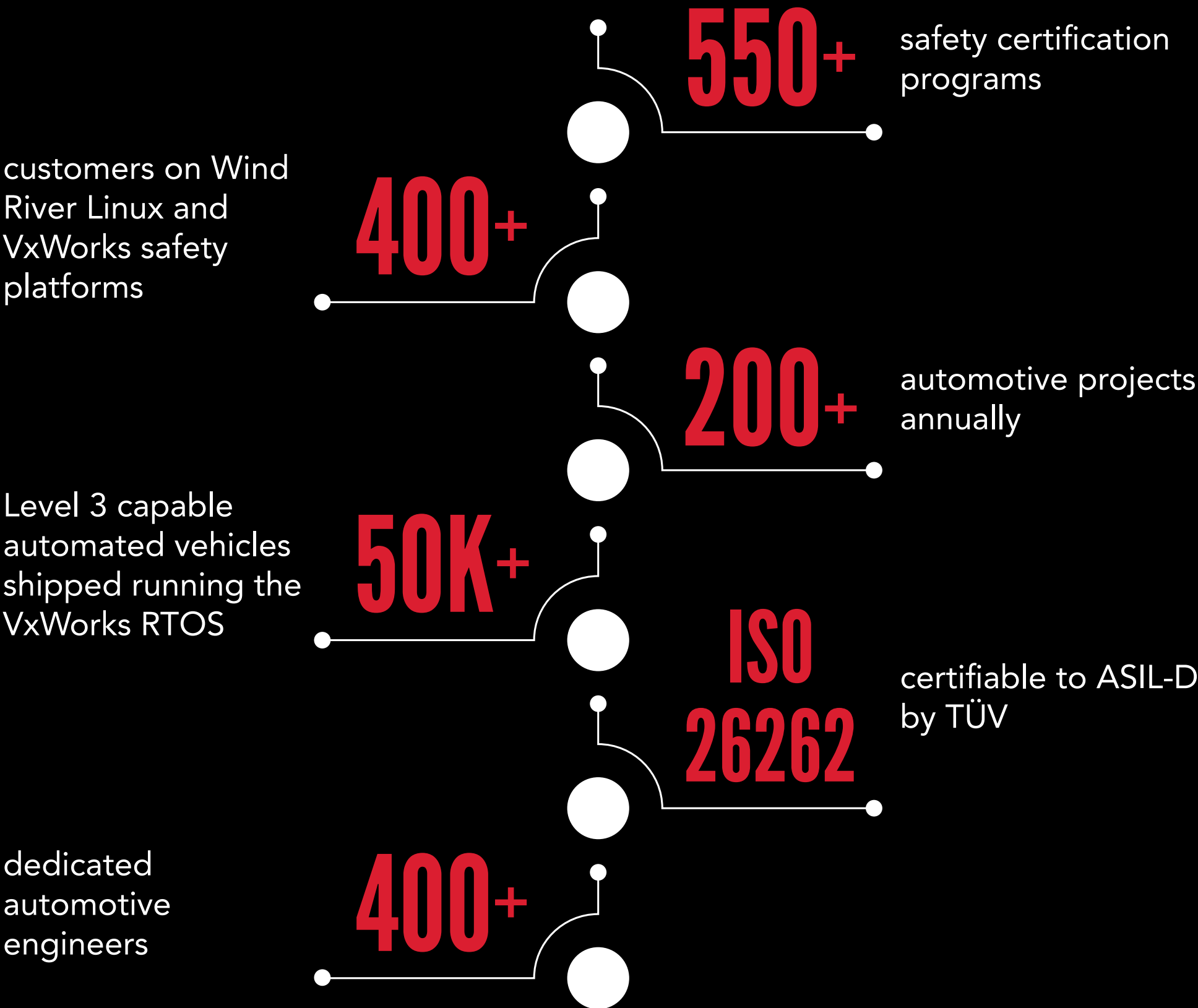
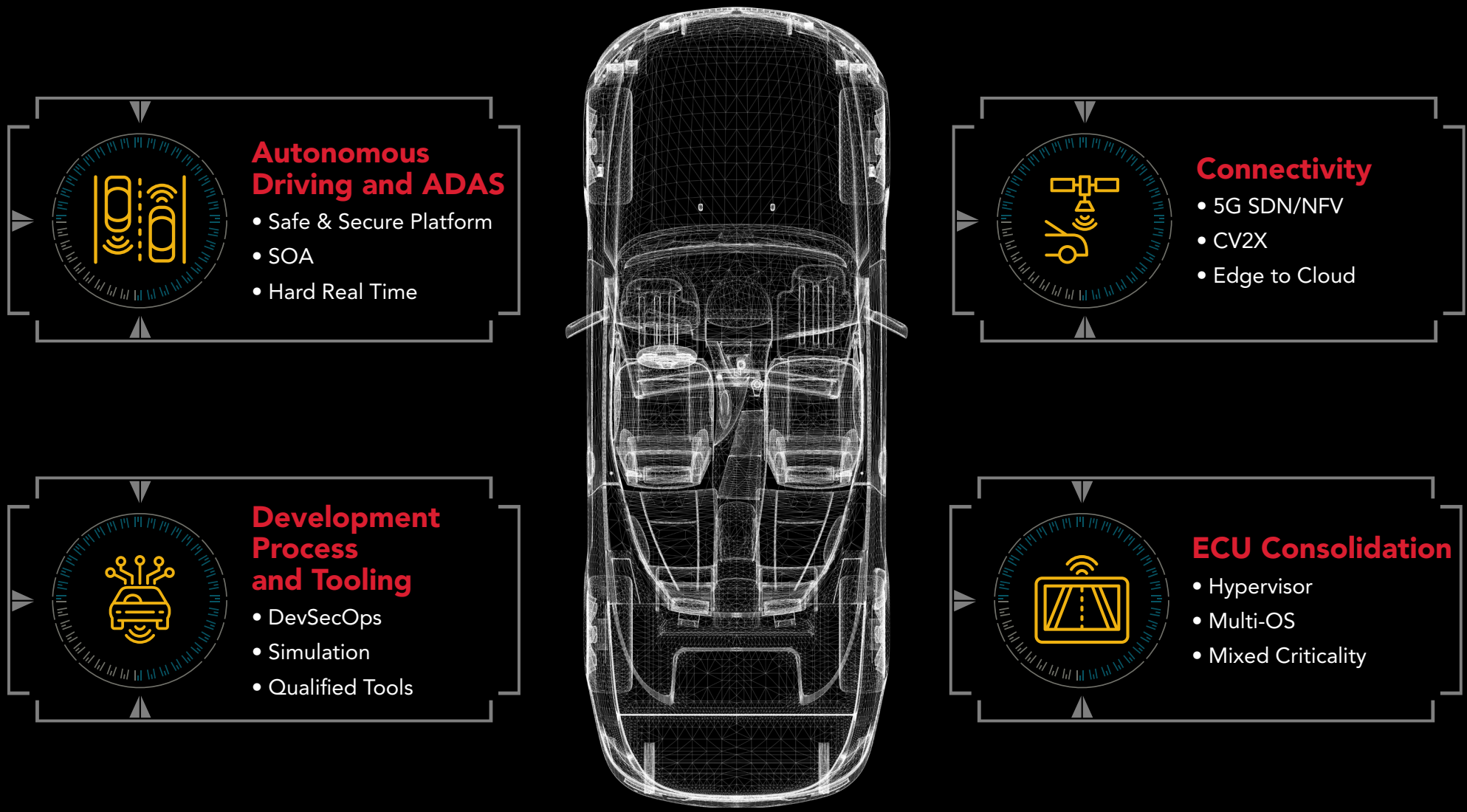
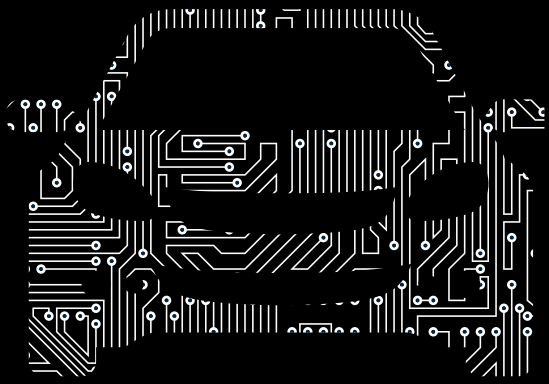




# REALIZE THE DIGITAL FUTURE OF THE PLANET WITH REAL-TIME AI SYSTEMS



**MOST COMPREHENSIVE**  
hypervisor to support hard real-time OSes with true multi-core capability



**INDUSTRY-LEADING**  
real-time, deterministic RTOS and Linux for safe and secure applications

**Proven** in hundreds of safety-critical projects across multiple industries and certification standards

**Broad spectrum** of embedded processor support: 32-bit, 64-bit, and multi-core capabilities on ARM, Intel, and Power Architecture

**Strict quality and processes** such as CMMI, ASPICE, CI/CD, long-term maintenance, and security development lifecycle

SOME THINGS ARE SO IMPORTANT,  
THEY SIMPLY MUST WORK.  
**THIS IS WHY WE EXIST.**  
WHEN CUSTOMERS SET OUT TO BUILD MISSION  
CRITICAL SYSTEMS, THEY TURN TO US.