

Wind River VxWorks 61508 Platform

Wind River VxWorks 61508 Platform enables VxWorks developers access to Wind River's commercial off-the-shelf (COTS) platform for delivering applications that must be certified to the stringent requirements of IEC 61508 (functional safety of electrical/electronic/programmable electronic safety-related systems [E/E/PES]) and other related software standards. With VxWorks 61508 Platform, developers can take full advantage of technological advances in microprocessors that the VxWorks COTS real-time operating system (RTOS) enables, with the assurance that they will have a strong operating system foundation to meet the most demanding safety certification standards.

COTS Without Compromise

The industrial market has a history of success using standard commercial microprocessors for a variety of applications that can directly affect safety and reliability. To ensure that industrial systems contain a consistent high quality to meet the demands of a variety of safety criticality levels, the IEC (International Electrotechnical Commission) developed the IEC 61508 industrial safety standard to provide guidance on creating, certifying, and

deploying these devices. These specifications are internationally recognized. Wind River's IEC 61508 Certification Evidence DVD contains a complete COTS certification package that meets these stringent objectives and therefore enables our customers faster time-to-market and gives equipment manufacturers a competitive advantage in the ability to leverage additional, ready-made technology from Wind River partners.

Integrated Development Environment

VxWorks 61508 Platform includes the award-winning Wind River Workbench development suite. Wind River Workbench is an Eclipse-based collection of tools designed to accelerate time-to-market for developers building devices with VxWorks real-time operating systems. From hardware and board initialization to application development, Workbench offers deep capability across the development process in a single integrated environment, with complete platform integration, including powerful tools for debugging, code analysis, and test.

Based on the Eclipse framework, Workbench can be extended through in-house, third-party, open source, and

commercial plug-ins. In addition, VxWorks 61508 Platform provides a full-featured command-line build system and debugging tools for developers who prefer this type of environment. These command-line tools can be easily integrated into a customized build system. The Workbench development environment helps reduce development costs, helps manage code complexity, eases tool integration, and enables standardization on a common development foundation across the enterprise.

Wind River VxWorks 61508 Platform

Included Components

- Wind River Workbench 3.1
- Wind River VxWorks 6.6
- Wind River VxWorks 6.6 for IEC 61508
- GNU Compiler 4.1.2
- Wind River Compiler 5.6.0
- MPC 8349E Reference BSP (PowerPC 603 architecture, PowerPC e300 core)

Optional Components

- UDP/IPv4 network stack with multicast for VxWorks 6.6 for VxWorks 61508 Platform
- IEC 61508 SIL 3/2/1 certified TCP/UDP/IPv4 network stack with multicast for VxWorks 61508 Platform
- Workbench plug-in for on-chip debugging (OCD)

Supported Hosts

- Windows XP Professional, Windows Vista (Business and Enterprise)
- Solaris 9, Solaris 10
- Red Hat Enterprise Linux, Workstation 4 and 5
- Red Hat Fedora 9
- OpenSUSE Linux 10.2 and 11

Table of Contents

| | | | |
|--|---|---|---|
| COTS Without Compromise..... | 1 | Wind River Workbench 3.1 | 3 |
| Integrated Development Environment..... | 1 | Wind River Certification Track Record | 4 |
| Leveraging the Power of VxWorks 6 | 2 | Partner Ecosystem..... | 4 |
| IEC 61508 Certification Evidence DVD | 2 | Professional Services..... | 4 |
| Wind River Network Stack for IEC 61508 | 3 | Installation and Orientation Service..... | 5 |
| | | Education Services | 5 |
| | | Support Services | 5 |

Development Suite

| | |
|----------------------|--------------------|
| Wind River Workbench | |
| Wind River Compiler | Workbench Debugger |
| GNU Compiler | Host Shell |

Software Partners

| | |
|----------------------------------|---------------------|
| Java | OpenGL Graphics |
| IEC 61508 Certification Services | Simulation Platform |
| Design Tools | Test Tools |

Operating System and Middleware

| |
|---|
| IEC 61508 SIL 3/SIL 2/SIL 1 Certification Evidence* |
| IEC 61508 Certified Network Stack (TCP/UDP/IPv4)* |
| VxWorks Cert 6.6 |

*Optional

Hardware Partners

| |
|-------------|
| COTS Boards |
|-------------|

Services

| | |
|-------------------------------------|------------------------|
| Education Services and Installation | Platform Customization |
| System Design | Design Services |
| Hardware/Software Integration | |

Figure 2: Wind River Network Stack for IEC 61508

Leveraging the Power of VxWorks 6

VxWorks 61508 Platform is based on the standard VxWorks 6 operating system. VxWorks 61508 Platform includes a full commercial version of VxWorks 6.6 as an integral part of the development package. This packaging enables the use of a standard VxWorks 6 development environment, including the Wind River run-time analysis tools, Simulator, System Viewer, and Source Analyzer.

VxWorks 6.6 for IEC 61508 includes more than 240 system calls selected from VxWorks 6.6, all of which are fully

deterministic and deployable under guidelines outlined in the IEC 61508 safety standards. These calls include cache, clock, event flag, interrupt, memory management, message queue, ring buffer, semaphore, signal, and task management calls, along with a wide array of C library functions. With VxWorks 6.6 for IEC 61508 developers enjoy the following advantages:

1. VxWorks code does not need to be modified. All common system calls used in development environments can be immediately transitioned into an IEC 61508 certification environment.

2. This system call commonality drives a minimal learning curve for developers already familiar with VxWorks because the Workbench development environment and VxWorks calls are the same in both uncertified and certified configurations.

3. VxWorks 6.6 for IEC 61508 is a COTS product, with the full leverage of COTS components: standardized usage, significantly lower costs, open toolchains, and shared certification evidence for rapid IEC 61508 acceptance.

Contact your local Wind River sales representative for complete details on our VxWorks 6.6 for IEC 61508 system calls.

IEC 61508 Certification Evidence DVD

VxWorks 61508 Platform is backed by the industry's most comprehensive set of certification artifacts, which supports all IEC 61508 SIL 3 requirements. This fully hyperlinked DVD enables rapid traceability analysis of certification data, from the requirements, design, source and binary code, and test case phases, using a simple browser. With this Certification Evidence DVD, the review of piles of printed and individual computer-based certification artifacts is no longer required. This certification package DVD contains the VxWorks 61508 Platform Safety Manual and all required IEC 61508 SIL 3 documentation. The certification package also includes the TÜV certificate for VxWorks 61508 Platform.

This certification evidence can also be used in related IEC 61508 safety certification efforts, for example the CENELEC (European Committee for Electrotechnical Standardization) railway application standards.

SNTP
TFTP

ARP Routines, ifconfig,
netstat, routec

| Sockets API | | |
|------------------------|-------------|-------------|
| UDP Sockets | TCP Sockets | Raw Sockets |
| UDP | TCP | |
| Hooks to Add Protocols | | |
| IP, ICMP, ARP | | |

Key

Not in Certified Subset

Figure 2: Wind River Network Stack for IEC 61508

Wind River Network Stack for IEC 61508

Wind River Network Stack for IEC 61508 is an embedded TCP/UDP/IPV4 network stack that can be used in conjunction with VxWorks 61508 Platform. Like all Wind River IEC 61508 certification products, this network stack has complete certification evidence, available for IEC 61508 certifications at SIL 3, SIL 2, or SIL 1. This network stack uses most of the same APIs as Wind River's VxWorks 6.x networking stack and supports the BSD sockets API (datagram, stream, and raw sockets), enabling the easy migration of networking software from VxWorks and Linux platforms.

Wind River Workbench 3.1

Provided as part of the VxWorks 61508 Platform, Wind River Workbench

supports application development based on the full-featured VxWorks 6 kernel. This allows for optimization and testing using the full power of Workbench's industry-leading tools and techniques, providing developers with a very rich programming and debugging environment. Using the full-featured VxWorks 6 kernel for application development allows the use of all of the standard Workbench tools for VxWorks 6 development, including the VxWorks Simulator and the Workbench analysis tools such as System Viewer, Code Coverage Analyzer, Data Monitor, Memory Analyzer, and Performance Profiler. As the project moves into certification test and deployment, a subset of the standard VxWorks 6 tools is available that allows

developers to debug applications built with the certification kernel and perform final testing and integration on the deliverable system hardware.

For VxWorks 61508 Platform projects that use the certified kernel, Workbench includes the following features.

Eclipse

Because of its openness, capability, and strong community support, Eclipse was chosen as the framework for the Wind River Workbench development suite. The Eclipse 3.4 framework supplies the necessary infrastructure to graphically and functionally integrate the components of Workbench. Open, extensible, and backed by a strong community of commercial and open source developers, the Eclipse framework provides developers using Workbench with a wide range of additional integrated functionality.

Project System

The Workbench project system allows developers to organize and manage the primary components in a device software development project, including source files and target systems. VxWorks projects of different types can be created for configuring and building kernel images and board support packages (BSPs) as well as application projects. By design, Workbench enables users to manage multiple projects simultaneously.

Build System

The Workbench build system specifies the tools, options, and parameters to use when building VxWorks software projects, enabling you to set build parameters easily from the project level down to the individual file level. The build system allows for use of simple global build-setting, fine-grained control at the level of an individual file, and everything in between.

Command-Line Build System

In addition to the Workbench build system, a full-featured command-line build system is provided for developers who prefer that type of environment. Using GNU make, Tcl libraries, and VxWorks-specific tools, developers can

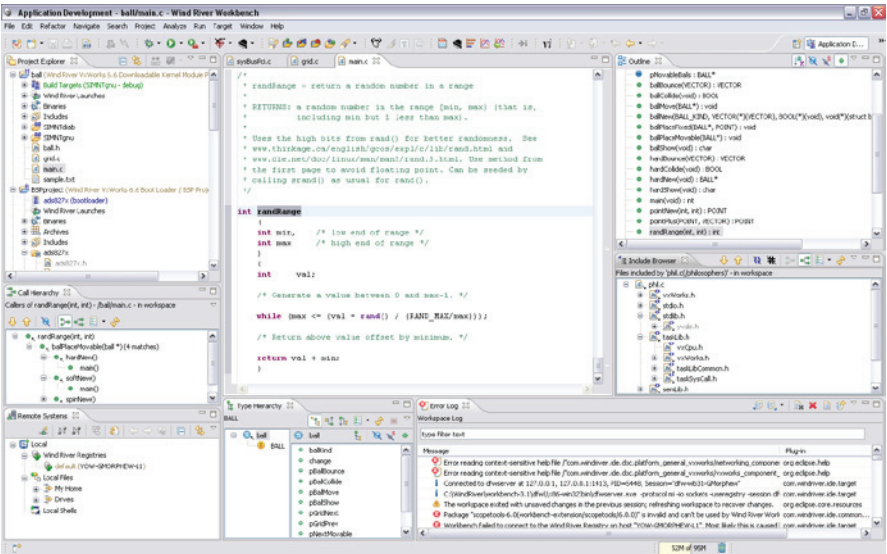


Figure 3: Wind River Workbench

configure VxWorks source and build VxWorks images as well as develop applications and libraries using command-line build facilities. These command-line tools can be easily integrated into a customized build system.

Wind River Compiler and Wind River GNU Compiler

Wind River Compiler is the default C compiler for building the VxWorks 6.6 for IEC 61508 kernel, libraries, BSPs, and applications in Wind River Workbench. This compiler's optimization capabilities are based on and extend the industry-hardened Diab compiler technology, and it produces robust, tight, fast-executing code.

Wind River GNU Compiler is based on the Free Software Foundation (FSF) distribution of the GNU compiler. Wind River has optimized a standard version of the compiler specifically for use with VxWorks 6.x.

Both compilers are included and supported as part of Wind River Workbench for VxWorks 6.6 for IEC 61508 for application development.

Workbench Debugger

Workbench Debugger addresses the needs of developers involved with hardware bring-up, firmware/driver/BSP development, and application development. It provides more capability than the GNU debugger (GDB) or other basic source-level debuggers. These capabilities can be extended further with Wind River's on-chip debugging solutions. In combination, these tools provide the necessary functionality for hardware bring-up, device driver/BSP debugging, kernel debugging, and application software debugging.

Workbench Debugger provides extensive browsing and inspection capabilities on objects in the target platform. This awareness of VxWorks 6.6 for IEC 61508 objects provides an enhanced debugging experience that allows greater insight and productivity when debugging.

Host Shell

The Host Shell provides a command-line debugging interface that allows you to invoke both VxWorks 6.6 for IEC 61508 and application module subroutines. The Host Shell executes on the development host, not the target, but it enables you to spawn tasks, read from or write to target devices, and exert full control over the target. Because the Host Shell executes on the host system, you can use it with minimal intrusion on target resources.

Wind River Workbench, On-Chip Debugging Edition

The Workbench development environment provided with VxWorks 61508 Platform can be enabled for on-chip debugging. When using VxWorks 6.6 for IEC 61508 with the certified kernel, the target debug agent must be removed before final certification. In this situation, Wind River Workbench, On-Chip Debugging Edition is the optimal debugging solution. Wind River's on-chip debugging capability, along with Wind River ICE, Wind River Trace, or Wind River Probe hardware, provides system-level debugging when debugging with a target debug agent is not possible. On-chip debugging provides developers with complete system-level control of their environments at all times, enabling more efficient and effective hardware bring-up, firmware development, and device driver and BSP generation.

Wind River Certification Track Record

Wind River VxWorks DO-178B and IEC 61508 products are now in more than 200 projects, with dozens added every year. Using COTS certification products from Wind River significantly reduces the cost of developing single-use proprietary solutions and speeds time-to-market with proven, robust device software components.

Partner Ecosystem

Wind River's world-class partner ecosystem assures tight integration between our core technologies and those of the premier hardware and software companies we've chosen to

complement our solutions. Our partners help extend the capabilities of Wind River's development and run-time platforms by offering out-of-the-box integration and support for key technologies in the industrial and medical markets. Our customer support team is trained to troubleshoot partner technologies in use with Wind River products, making ours the most comprehensive and best-supported partner ecosystem in the Device Software Optimization (DSO) industry.

Professional Services

Wind River Professional Services, a CMMI Level 3–certified organization, enables you to reduce risk and focus on development activities that add value and differentiate your design. As part of our comprehensive DSO solution, Wind River offers industry-specific services practices, with focused offerings that help you meet strict market deadlines while keeping development costs down. Our experienced team delivers device software expertise that solves key development challenges and directly contributes to our clients' success. Backed by our commercial-grade project methodology, Wind River Professional Services includes the following:

- Requirements discovery and definition
- BSP and driver optimization to include certification projects
- Software system and middleware integration
- Application and infrastructure development
- Hardware and FPGA design for prototyping or market-ready systems

Typical projects range from two to four man-weeks for driver and BSP implementation, to one man-month to one man-year for hardware design or extensions to an existing software solution, to multi-man-year programs that bring customer concepts to reality through design, creation, and system test and verification. Professional Services has extensive experience with safety-critical systems for both the avionics and industrial markets.

Professional Services has implemented both hardware and software solutions for the industrial and medical markets and continues to work with standards organizations to establish the next-generation platforms.

Installation and Orientation Service

With proper installation and orientation of the VxWorks 61508 Platform, you won't waste time solving easily avoidable problems before you can begin your next development project. Wind River offers an Installation and Orientation Service to ensure your project starts on time and without hassle by delivering the following:

- **Onsite installation:** Guided install on your hardware and host platform, along with a sample build process, demonstrations, and examples of customizations
- **Hands-on orientation:** Architecture, development file system, adding open source packages, porting drivers, addressing design issues
- **Advice:** Introduction to Wind River support channels and processes, additional services, project review, and consultation

The Wind River Installation and Orientation Service will expedite your path to productivity, allow you to rest assured that we have eliminated a common source of user error, and help you realize all of the platform's potential.

Education Services

Education is fundamentally connected not only to individual performance, but also to the success of a project or entire company. Lack of product knowledge can translate into longer development schedules, poor quality, and higher costs. The ability to learn—and to convert that learning into improved performance—creates extraordinary value for individuals, teams, and organizations. To help your team achieve that result, Wind River offers flexible approaches to delivering product education that best fits your time, budget, and skills development requirements.

Personalized Learning Program

Wind River offers a unique solution to minimize the short-term productivity drop associated with the process of adopting new device software technology and to optimize the long-term return on investment in a new device software platform. The Wind River Personalized Learning Program delivers the right education required by individual learners to accomplish their jobs. The program identifies work-related skill gaps and generates development plans, materials, and learning events to address these skill gaps and quantifies the impact of the development activities for each individual user.

This programmatic, focused, and project-friendly approach to skills development results in a significant increase in the personal productivity of your team members, improved efficiency in the processes they employ, and faster adoption of the technology you have purchased. The Personalized Learning Program delivers improved business performance; customers have reported a return-on-investment ranging from 18 percent to 80 percent over a traditional training approach.

Consult your local Wind River sales representative for more information on the Personalized Learning Program.

Public Courses

Wind River's public courses are scheduled for your geographical convenience. They are conducted over one to five days, using a mixed lecture and interactive lab classroom format that leverages the experience of Wind River instructors and other course participants. Courses provide a fast, cost-effective way for students to become more productive in Wind River technology. Benefits of public courses include the following:

- A conceptual introduction that orients students to the subject matter
- A selective examination of the details, focusing on the most commonly used areas or on areas with which users tend to be least familiar
- Personal guidance and hands-on application of individual tools and course concepts

- The chance to grasp device software concepts, as well as the fundamental issues involved in real-time design
- The knowledge needed to develop device drivers, perform hardware porting, or develop applications
- Answers to specific questions about topics addressed in the course

Consult your local Wind River sales representative for course schedules and fees.

Onsite Education

If you have a large project team or a number of new users, you may benefit from custom onsite education. Instructors will consult with you and, based on the workshop series curriculum, determine which topics should be included and emphasized. This type of education offers an opportunity for one-on-one discussions with our instructors about your specific project needs, technical requirements, and challenges—all in the comfort of your own office.

The following are some advantages of onsite education:

- Your entire team gains a common knowledge base.
- It helps ensure that knowledge and skills will transfer from the classroom to your workplace.
- Use of your location saves employees travel expenses and time away from the office.

Consult your local Wind River sales representative for further information about onsite education.

Support Services

Wind River Customer Support, a Support Center Practices (SCP)—certified organization, provides support for all Wind River VxWorks platforms. Your subscription to VxWorks 61508 Platform includes full maintenance and support delivered through Wind River's Online Support (OLS) website and our worldwide technical support team. While under subscription, customers receive both maintenance updates and major upgrades.

Support for VxWorks 61508 Platform

Visit Wind River Online Support at www.windriver.com/support for fast access to product manuals, downloadable software, and other problem-solving resources. OLS offers a comprehensive knowledge base with a robust search feature for locating product information and manuals by keyword, author, published date, document type, language, and solution category.

Additional support features, including proactive email alerts covering particular technologies, platforms, or product patches and technical tips for common problems, are available for all customers on subscription. OLS visitors can also access a community of developers to discuss their issues and experiences.

Support on modified or unsupported configurations is best-effort-based. Wind River Customer Support will try to reproduce the problem on a supported configuration. If the problem can be validated, Wind River will provide a fix that will be tested on a supported configuration. Wind River Professional Services can provide support for boards or host operating system versions that are not supported by the standard product as well as for customized versions of the source code or additional nonstandard packages.

Customer Support will provide bug fixes, following the process outlined in Wind River's Customer Support User's Guide (CSUG), available at www.windriver.com/support/resources/csug.pdf. Customers with a valid support or subscription agreement are eligible for all updates and major upgrades to VxWorks 61508 Platform free of charge. If customers

cannot update to a new version but need critical parts of the update applied to an older version of the product, Wind River Professional Services can be engaged to backport the required functionality on a case-by-case basis.

If you cannot find the information you need through Online Support, contact our global support team for access to the industry's most knowledgeable and experienced support staff.

North America, South America, Asia/Pacific

support@windriver.com
Toll-free tel.: 800-872-4977 (800-USA-4WRS)
Tel.: 510-748-4100
Fax: 510-749-2164
Hours: 6:00 a.m.–5:00 p.m. (Pacific time)

Japan

support-jp@windriver.com
Tel.: +81 3 5778 6001
Fax: +81 3 5778 6003
Hours: 9:00 a.m.–5:30 p.m. (local time)

Europe, Middle East, Africa

support-ec@windriver.com
Toll-free tel.: +800 4977 4977
France tel.: +33 1 64 86 66 10
France fax: +33 1 64 86 66 66
Germany tel.: +49 899 624 45 444
Germany fax: +49 899 624 45 999
Italy tel.: +39 011 2448 411
Italy fax: +39 011 2448 499
Middle East region tel.: +972 9741 9561
Middle East region fax: +972 9746 0867
Nordic tel.: +46 8 594 611 20
Nordic fax: +46 8 594 611 49
UK tel.: +44 1793 831 393
UK fax: +44 1793 831 808
Hours: 9:00 a.m.–6:00 p.m. (local time)